

North Tyneside Riders CC Presents

MH9 Hill Climb - Winters Gibbet.

To be held on Sunday 8th September 2024

Promoted on behalf of Cycling Time Trials under their Rules & Regulations

Event Secretary

**Ian Gallon
17 Springfield gardens, Wallsend.
Tyne & Wear.
NE28 8AJ.
07828900383**

Galnufc@msn.com

Time keepers.

Sharon Dyson, Peter & Frances Schultz.

First Rider is off at 10.03 am.

Please note: Any problems on the road please contact Pam Shaper on 07710536578 who will be looking after the HQ while the race is in progress.

HQ – Elsdon Village Hall, Elsdon, Northumberland. NE19 1AA.

The HQ will be open at 9am to sign on & numbers will be available from then onwards.

There will be Coffee and Tea refreshments available afterwards & also a presentation.

Parking is available at Elsdon Village Hall & but please park responsibly in the village.

- 2.2 Mile Hill Climb –Start on minor Gibbet Road south of Elsdon Village Opposite the first Telegraph pole (A1) on the right crossing the small bridge in the direction of the Gibbet. Proceed uphill to FINISH at the Northumberland National Park stone sign at the beginning of the natural lay-by.
- **Safety notes:**
- Vehicles of competitors / officials / marshals / helpers to be parked safely and without hindrance to other road users.

**ALL RIDERS ARE REMINDED OF THEIR
RESPONSIBILITY FOR “HEADS UP” RIDING
AT ALL TIMES TO BE AWARE OF HAZARDS.**

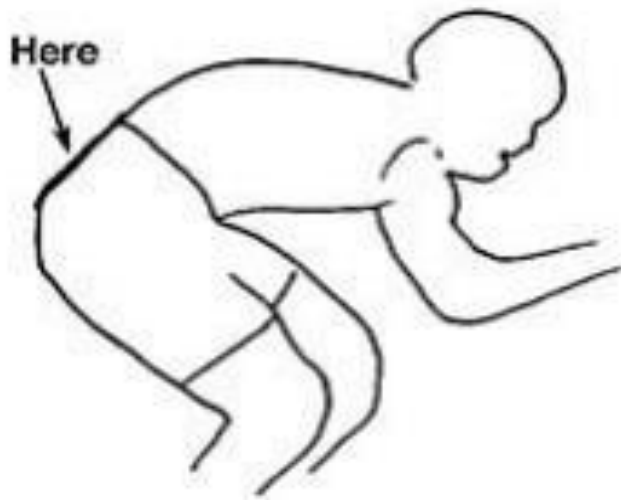
Please also ride on the lefthand side of the road.

All riders must sign the “sign on sheet” when collecting their numbers and must “sign out again” when returning your number after the race.

Please make sure your number is placed correctly on your jerseys/skinsuits.

If the timekeepers are unable to read your number then your time may be void.

Below is a diagram for positioning your number on jerseys/skinsuits.



ALL Riders Please note.

**A WORKING FRONT & REAR LIGHT MUST BE
FIXED TO THEIR MACHINE PLUS WEARING A
HELMET ARE NOW COMPULSORY TO START
A CTT EVENT.**

All riders are responsible for their own safety.

You must obey the rules of the road and obey all traffic signs, signage and direction signs. It is your responsibility to ensure that your machine is roadworthy and that you ride safely at all times.

You must look ahead and not ride with your head down.

You must not take pace or shelter from any other vehicle or competitor (no drafting).

Failure to comply with the above may lead to disciplinary action being taken.

No warming up on the course once the race has started or dismounting in the finish area.

NTR MH9 Prize list.

1st Open £30.

2nd Open £20.

3rd Open £10.

1st Female £30.

2nd Female £20.

3rd Female £10.

1st V40. V50. V60 & V70 - £15 each.

1st Youth £15.

2nd Youth £10.

1st Junior £15.

1st Team £30 – (£10 per rider).

**1 Rider = 1 prize (The Highest prize will be awarded)
Except for Team prizes.**